

A large, abstract graphic in the background consisting of numerous thin, white, curved lines that create a sense of motion and depth, resembling a spray or a chamber's interior. The lines are more densely packed in some areas and more sparse in others, creating a gradient effect.

# Salt Spray Chambers

# Check out what's

**NEW!**



## **Modified Chambers Available** \* Check page 3 for details.

Standard Chambers    WTS:    NSS

Modified Chambers    WTS/M1: NSS + Intermittent Spray

WTS/M2: NSS + CASS/AASS

WTS/M3: NSS + 100% Humidity



## **More Free Parts**

\* Check page 7 for details.

Measuring Cup

Fog Quantity Calibration Kit

Rods and Shelves

Sodium Chloride

USB Digital Docs

---

Chamber Drain Piping                      extra

Bubble Tower Draining Piping

Vent Piping



## **Onsite Services Package**

\* Check page 7 for details.

Technician visit for installation, trial running, training and advising.



## **Deliver-to-door Service**

\* Check page 7 for details.

Free yourself from a mass of paperwork, negotiating and bargaining.

Keep away from the risk during transportation.



## **Additional Solution Reservoir** \* Check page 9 for details.

Tired with refilling the chamber daily? The additional reservoirs extend unattended test time to 5 - 10 days.

# Weice Salt Spray Chambers

These chambers perform traditional Salt Spray(Fog) Test and Water Fog Test.

Several modifications are available to extend test ability to cycle test, acidic test and 100% humidity test.

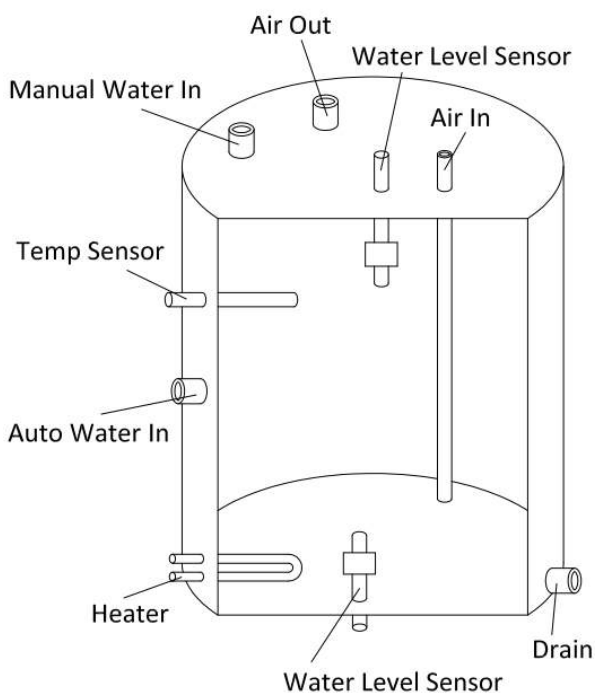


**Simple**  
**Reliable**  
**Affordable**

# Unique Features

## Anti-Corrosion Heater(s)

Heater(s) is made by **TITANIUM**, titanium has been recognized as the most anti-corrosion material, plus the Teflon coating applied on, they have the excellent anti-corrosion ability.



## Advanced Bubble Tower

**304# STAINLESS STEEL** material, no corrosion, no deformation.

Special structure ensures no water being sprayed out, and compressed air being well saturated.

Internal **Teflon** coating enhance anti-corrosion ability.

# Standard Chambers

## WTS

The WTS salt spray chambers perform traditional continuous salt spray test. Immersed heater(s) inside chamber raising temperature rapidly and keeping sample moist.

These chambers are limited to perform Neutral Salt Spray (NSS) only.



# Optional Modifications

## M1-Intermittent Spray

These modified chambers have all the advantages of WTS chambers, and also are able to repeat the spray&pause cycle by equipping a cycle timer to preset test time and pause time separately.



## M2-CASS&AASS Ability

These modified chambers have all the advantages of WTS chambers, but the immersed heater(s) is replaced by dry heating plate(s) to keep the PH of collected solution at acidic range.

These chambers are perfect to Acetic Acid Salt Spray (AASS) and Copper-Accelerated Acetic Acid-Salt Spray (CASS) tests.



## M3-100% Humidity Test

This modification have all the advantages of WTS standard chambers. A solenoid valve is integrated on the vent which will close vent automatically when performing 100% humidity test.

\* Humidity range: 95%-100%RH.



# Best Components

All the key components of WTS chambers are supplied by famous brands, eg. Omron, SMC, Schneider, Fotek and more.

Newest version solenoid valve

Brand: SMC



Colorful digital temperature controller

Brand: Omron

Upgraded middle relay

Brand: Omron



Reliable circuit breaker

Brand: Schneider



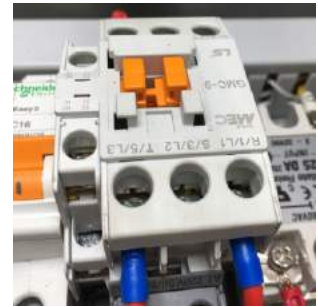
Classical solid state relay

Brand: Fotek



Reinforced contractor

Brand: LG



Excellent parts extend the chamber lifespan 5 plus years.

# Easy Operation & Maintenance



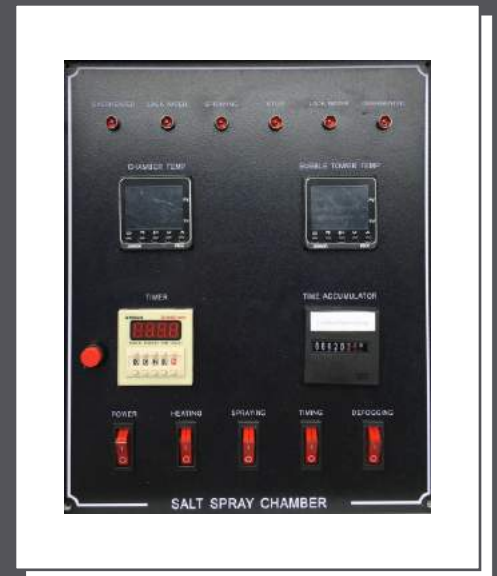
No integrated system



No complex operating procedures



No technical knowledge required for maintenance



Control Panel

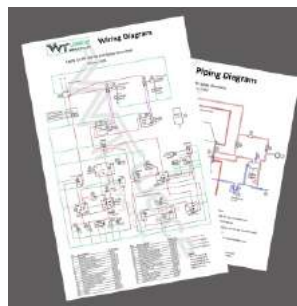
All the WTS salt spray chambers are controlled by individual components, no touch screen, no integrated control systems, it is very easy to understand the principle and operate the chamber following our detailed manual.

In case any parts failure, no technical knowledge is required to repair or replace the components. This saves time and minimize the shut down.



Control Components

Detailed wiring diagram and piping diagram are supplied with each chamber for quick trouble shooting.



Diagrams

# Technical Parameters

Standard Chambers					
Model	WTS60	WTS90	WTS120	WTS160	WTS200
Internal Dimensions W*D*H	60*45*40 cm 2*1.5*1.3 ft	90*60*50 cm 3*2*1.6 ft	120*80*60 cm 4*2.6*2 ft	160*100*60 cm 5.2*3.2*2 ft	200*120*60 cm 6.5*4*2 ft
External Dimensions W*D*H	109*59*101 cm 3.5*2.0*3.3 ft	142*76*118 cm 4.6*2.5*3.8 ft	195*98*128 cm 6.4*3.2*4.2 ft	235*118*131 cm 7.7*3.8*4.3 ft	275*118*131 cm 9.0*3.9*4.3 ft
Test Volume <sup>*1</sup>	108L 3.8 cu ft	270L 9.5 cu ft	576L 20 cu ft	960L 33.7 cu ft	1440L 50.5 cu ft
Max Power <sup>*2</sup>	1500W	2000W	3800W	4800W	5800W
Solution Reservoir Volume	20L 0.5 cu ft	25L 0.9 cu ft	50L 1.7 cu ft	58L 2.0 cu ft	
Solution Consumption Rate	1.0L/h		1.5L/h		
Atomizing Nozzle	1pc		2pcs		
Cover Lifter/Castor <sup>*3</sup>	N/A		Available		
Solution Reservoir	Built-in				
Bubble Tower Volume	4L 0.14 cu ft				
Body Material	Improved PVC(8mm thickness)				
Color	Gray				
Temperature Range	Up to +60°C (Test Cabinet) Up to +70°C (Bubble Tower)				
Heater Material	Titanium				
Solution Collect Rate	Adjustable from 0.5 to 3.0 ml/80 cm <sup>2</sup> /h				
Compressed Air Supply <sup>*4</sup>	2bar/29psi/0.2MPa minimum(spray) 5bar/72psi/0.5MPa minimum(cover lifter)				
Water Supply	1bar/14psi/0.1MPa minimum (for auto-fill)				
Power Source	1Phase		3Phase		
	Voltage and frequency dependent on country/region of installation				
Drain	Drainage required				
Exhaust <sup>*5</sup>	Facilities should be prepared to exhaust fog outside				
Defogging	Available				
Water Refilling	Manually or automatically				
Water Level Control	Automatically for both test chamber and bubble tower				
Protection	Electric leakage protection Lack water protection Over-heat protection Alarm by sound and light				

Modified Chambers	
Suffix	M1
Cyclic Test	Available by repeating spray and pause steps
Step Time	0-999 presettable
Suffix	M2
Heating Element	Titanium plate(s) dry-heat
Suffix	M3
100% Humidity	Humidity range: 95%-100% at 35°C-45°C

<sup>\*1</sup>Test volume includes built-in solution reservoir.

<sup>\*2</sup>Max power measured from standard chambers.

<sup>\*3</sup>Compressed air drove cover lifters are only available for chambers not smaller than WTS120.

<sup>\*4</sup>Air compressor should be prepared by customer.

<sup>\*5</sup>Exhaust should comply with local laws and regulations.



# Free Accessories

All Weice's salt spray chambers come with a Package of Standard Accessories free of charge.

Description	Quantity	Description	Quantity
Measuring Cup (5L)	1pc	Fog Quantity Calibration Kit	1set
Rods and Shelves	1set	Chamber Drain Piping	2meters
Sodium Chloride	1kg(2bottles)	Bubble Tower Drain Piping	2meters
USB Digital Docs	1pc	Vent Piping	2meters

# Onsite Services Package



Ordering No.: WT-SER

Weice has devoted to improve the after-sale-service since its inception, we are offering the optional **Onsite Services Package** to satisfy our customers. Our technicians will visit customers' factory as soon as the chamber arrival.

**Onsite Services Package includes:** [Contact our sales for more details!](#)

- \* Installation
- \* Trial Running
- \* Training
- \* Advising



Services Centers

# Deliver-to-door Service

Ordering No.: WT-DTD

By cooperating with the biggest NVOCC in China and hundreds of agencies in more than 100 countries, Weice is able to offer the Deliver-to-door service by sea shipping and air shipping at very competitive prices, very limited paperwork and procedures to help customers focusing on their own business.

**Deliver-to-door service includes**



Professional Packaging



Sea & Air Shipping



Customs Clearances



Inland Transportation



Deliver to Door

# Optional Accessories

**RECOMMENDED**



## WTS-ACC1 PH Meter

Measuring Range	0.0 - 14.0 pH
Resolution	0.1pH
Accuracy	+/-0.1pH
Display	3 digits
Power	4 X 1.5V(AG-13 Button Battery)
Calibration	3 points
Dimensions	85X40X40 mm(LXWXH)
Weight	88g
IP Code	Ip67

## WTS-ACC2 Concentration Meter

Measuring Range	0 - 100 <sup>0</sup> / <sub>00</sub>
Resolution	0. 1 <sup>0</sup> / <sub>00</sub>
Body Material	Aluminum Alloy
Temperature Compensation	Available
Dimensions	160X40X40 mm(LXWXH)
Weight	180g

**RECOMMENDED**



## WTS-ACC3 Handheld Temp & Humidity Meter

Temperature Range	-30°C to +100°C
Temperature Accuracy	+/-0. 5°C
Humidity Accuracy	+/-2%RH
Humidity Range	0 to 99. 9%RH
Dimensions	72X150X35 mm (LXWXH)
Data Log Speed	2. 5times/second
Power	1 X 9VDC battery

# Optional Accessories

(Continued)

## WTS-ACC4 Calibration Certificates

### WTS-ACC4-W

Weice Calibration Certificate



### WTS-ACC4-T

3rd Party Calibration Certificate



## WTS-ACC5 Access Port

Diameter 5 cm



\* Diameter customizable.

## WTS-ACC6 Additional Solution Reservoir

**RECOMMENDED**

These additional solution reservoirs extend the unattended test time from 1 day to 5 - 7 days. \*Auto-fill function(supplied with all chambers) should be efficient.

Model	WTS-ACC6-120	WTS-ACC6-200
Volume	120L	200L
Material	Food grade high density polyethylene	
Inlet	18cm diameter	
Outlet	1 inch diameter, valve assembled	
Dimensions	800X390X410 mm(LXWXH)	120L
	900X480X480 mm(LXWXH)	200L

### Stainless steel support

Height 650mm  
Max Load Bearing 300Kg



# Optional Accessories

(Continued)

## Spare Part Packages

Item	Qty	WTS-ACC7-F Premium Parts Package	WTS-ACC7-B Basic Parts Package
Atomozing Nozzle	1	Yes	Yes
Temperature Controller	1	Yes	Yes
Immersion Heater(Test Chamber)	1	Yes	Yes
Solid State Relay	1	Yes	Yes
Temperature Sensor	1	Yes	Yes
Immersion Heater(Bubble Tower)	1	Yes	-
Air Filter with Regulator	1	Yes	-
Timer	1	Yes	-
Middle Relay	1	Yes	-
Solenoid Valve	1	Yes	-

## WTS-ACC8 Sample Supports

### WTS-ACC8-1 Reinforced Sample Support

Material Improved PVC

Max Load Bearing 100Kg

\* This reinforced sample support is only available for 120, 160 and 200 chambers.

### WTS-ACC8-2 S-Hooks

Material AES

Max Load Bearing 2Kg / each

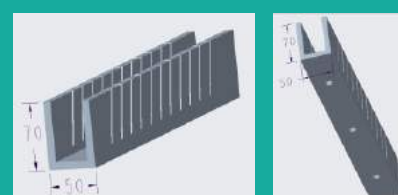
Packing&Quantity 24 pcs / bag

### WTS-ACC8-3 U-Shaped Tray

Material PVC

Max Load Bearing 5Kg / each

Slot Angle 15° to vertical



# Optional Accessories

(Continued)

## WTS-ACC9 Data Logger

**RECOMMENDED**

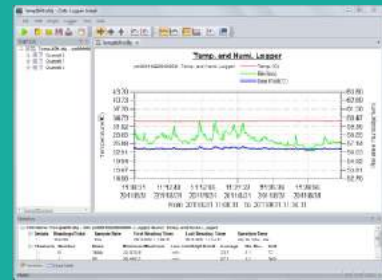


This logger records temperature and humidity at preset interval.

Download data to PC by USB interface, and analyse data by professional software.

### Technical Parameters

Temperature Range	-30°C to +70°C
Temperature Accuracy	+/-1°C
Humidity Range	0 to 100%RH
Humidity Accuracy	+/-3%RH
Resolution	0.1°C / 0.1%RH
Sensors	Built-in temperature and humidity sensors
Storage Capacity	32,000 pcs data
Logging Interval	2s to 24h presettable
Power	1 X 1/2 AA lithium battery 3.6V
Battery Lifespan	4 years, logging interval at 10min
Material	ABS
Dimensions	120X37X23 mm
Net Weight	90g
IP Code	IP 67
Software	Dgraph English version operated by PC
Computer System	Windows 7/8/10



## WTS-ACC10 Reference Specimens

Model	WTS-ACC10-1	WTS-ACC10-2	WTS-ACC10-3	WTS-ACC10-EB Electronic Balance	
Standard	ASTM B 117	ASTM B 368	ISO 9227	Max range	2000g
Dimensions	127*76*0.8mm	100*75*0.9mm	150*70*1mm	Resolution	0.01g
Material	Cold-rolled carbon steel	Nickel	CR4-grade steel	Display	LCD
Quantity	10pcs/pkg	4pcs/pkg	10pcs/pkg	Pan diameter	130mm
				Power	Rechargeable battery





# Optional Accessories

(Continued)

## WTS-ACC11 DI Water System

### Features

1. Microcomputer controller, fully automatic making water, transportation and wash, digital preset output pressure.
2. Multi-protection: Low Pressure, Lack Water, No Electricity and Overload.
3. Real time monitor conductivity and transportation pressure with digital value display.
4. Three filters remove any dust, sand, suspended solids, alga, residual chlorine, microorganism and other impurities.
5. Use DOW reverse osmosis membranes and Rohm and Haas resin.
6. 30L internal water reservoir is included.



### Technical Parameters

Input Water:	Tap water, pressure 0.15-0.3MPa.
Water Making Speed:	10-15L/h
DI Water Quality:	Conductivity<20 $\mu$ s/cm(adjustable as low as 5 $\mu$ s/cm)
Transportation Pressure:	200-300KPa(adjustable from 100-500KPa)
Transportation Flow:	1-1.5L/min
Dimensions:	900x490x550mm(HxLxW)
Power Source:	Dependent on country and area.

## Sodium Chloride(Salt)

Grade: GR Purity:  $\geq 99.8\%$

**WTS-ACC13-5:** 5Kg(500g x 10 bottles)

**WTS-ACC13-25:** 25Kg(25Kg x 1 barrel)

### Ingredients

Heavy metal(Pb),%	$\leq 0.0005$	N, %	$\leq 0.0005$
Mg, %	$\leq 0.001$	I, %	$\leq 0.001$
K, %	$\leq 0.01$	So4, %	$\leq 0.001$
Ca, %	$\leq 0.002$	Po4, %	$\leq 0.0005$
Fe, %	$\leq 0.0001$	Br, %	$\leq 0.005$
Ba, %	$\leq 0.001$	Water insoluble, %	$\leq 0.003$
As, %	$\leq 0.00002$	Fe(CN)6, %	$\leq 0.0001$



# Optional Accessories

(Continued)

## WTS-ACC14 Additional Air Filters

This filter assembly removes all the oil and dirt to ensure the test accuracy and protect salt spray chambers. It is consisted by three filters Q&P&S.



### WTS-ACC14 Packing List:

Filter Assembly 1set  
Fittings 1set  
Drain Valve 3pcs

- \* Three filters installed.
- \* Vertical mounting on the wall required.



Filter Q: 1st filter, remove most liquid and 3 $\mu$ m solid, remaining oil only 5ppm.

Filter P: 2nd filter, remove 1 $\mu$ m liquid and solid, remaining oil only 0.5ppm.

Filter S: 3rd filter, remove 0.01 $\mu$ m liquid and solid, remaining oil only 0.001ppm.

### Optional Filter Element:

WTS-ACC14-Q	Filter Q x1pcs
WTS-ACC14-P	Filter P x1pcs
WTS-ACC14-S	Filter S x1pcs
WTS-ACC14-QPS	Filter Q x1pcs + Filter P x1pcs + Filter S x1pcs



WTS-ACC14-Q



WTS-ACC14-QPS

## Some of our customers



## You may also interested in



Cyclic Corrosion Test Chambers



Temperature and Humidity Chambers

CE

ISO9001

## Weice Testing Instrument Co., Limited

2nd Industrial Area, Yousong, Longhua, Shenzhen, China

Tel: +86 755 8886 3420

Fax: +86 755 8886 3421

Email: [info@weicetestinginstrument.com](mailto:info@weicetestinginstrument.com)

[www.weicetestinginstrument.com](http://www.weicetestinginstrument.com)



Scan to visit our website